

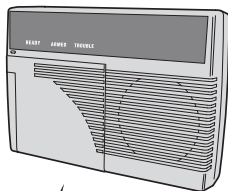
Linear SECURITY

RA-2400

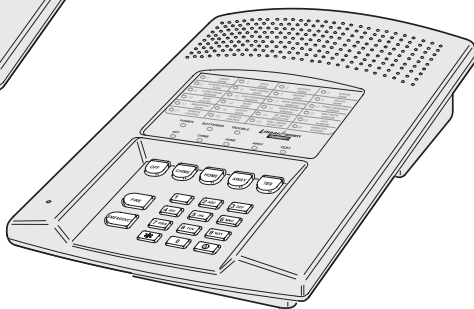
REMOTE ACCESS SOFTWARE



Linear SECURITY
DVS 1200



Linear SECURITY
DVS 2408



Linear SECURITY
DVS 2400

Reference Manual for Programming the DVS-1200, DVS-2400 & DVS-2408 Supervised Wireless Security Systems

WRITER'S NOTE: This publication could contain technical inaccuracies or typographical errors. Changes are periodically made to the information herein; these changes will be incorporated in new editions of the publication. Linear may make improvements and/or changes in the product(s) and/or software described in this publication at any time.

MS-DOS®, Windows™, WindowsNT™, Windows95™ and Windows98™ are registered trademarks of Microsoft Corporation.

Pentium® is a registered trademark of Intel Corporation.

IBM® is a registered trademark of International Business Machines Corporation.

**FOR TECHNICAL ASSISTANCE CALL:
Linear Technical Services: 1-800-421-1587**

TABLE OF CONTENTS

1. GENERAL INFORMATION	1
1.1 SOFTWARE DESCRIPTION	1
1.2 SYSTEM REQUIREMENTS	2
1.3 PROGRAMMING OUTLINE	3
1.4 PROGRAM INSTALLATION	4
1.5 TESTING THE MODEM	5
2. OVERVIEW	6
2.1 STARTING THE PROGRAM	7
2.2 NEW WINDOW	7
2.3 MENU BAR	8
2.4 ACCOUNT PROFILE WINDOW OVERVIEW	10
3. COMMUNICATIONS SETUP	11
3.1 COM PORT	12
3.2 SPEAKER	12
3.3 CONNECTION OPTIONS	13
3.4 MODEM INITIALIZATION STRING	14
4. CREATING A CUSTOM ACCOUNT PROFILE	15
4.1 NEW WINDOW	16
4.2 CUSTOMER INFORMATION	17
4.3 CONSOLE ACCESS CODES	18
4.4 CONSOLE ARM/DISARM	19
4.5 CONSOLE ENTRY/EXIT	20
4.6 CONSOLE ALARMS	21
4.7 CONSOLE HOME-AUTOMATION OUTPUT	22
4.8 CONSOLE AUDIO	23
4.9 SENSORS	24
4.10 COMMUNICATOR MAIN	26
4.11 COMMUNICATOR ROUTING AND NUMBERS	27
4.12 COMMUNICATOR ENABLED REPORTS	28
4.13 COMMUNICATOR 4 BY 2 FORMAT	29
4.13.1 4 BY 2 POINT-TO-POINT ALARM CODES	30
4.13.2 4 BY 2 POINT-TO-POINT TROUBLE CODES	31
4.13.3 4 BY 2 POINT-TO-POINT ARMING (CLOSING) CODES	32
4.13.4 4 BY 2 POINT-TO-POINT DISARMING (OPENING) CODES	33
4.13.5 4 BY 2 CONSOLE ALARM CODES	34
4.13.6 4 BY 2 GENERAL ALARM CODES	35
4.14 ADEMCO CONTACT-ID REPORT CODES	36
5. SENDING AND RECEIVING CONSOLE DATA	37
5.1 ACCESSING THE SEND/RECEIVE WINDOW	38
5.2 CHOOSING AN ACCOUNT PROFILE	39
5.3 CONNECTING TO A CONSOLE	40
5.4 SENDING DATA	42
5.5 RECEIVING DATA	43
5.6 CHANGING THE CONSOLE'S MODE	44
5.7 DISCONNECTING FROM THE CONSOLE	45
5.8 CLOSING RA-2400	46

1.1 SOFTWARE DESCRIPTION

What is the RA-2400 Remote Access Software?

The RA-2400 Remote Access software is a communications program designed to work with Linear's DVS Supervised Wireless Security Systems and other Linear products. The software runs on an IBM PC or compatible computer and connects to the console through the standard telephone network, or to the Console directly, with the computer's modem. This 32-bit software runs under Windows 95/98 or Windows NT operating systems.

RA-2400 sets the options for: Console access codes, exit/entry delays, alarm, audio, and sensors; communicator telephone numbers, call routing, formats, reporting codes, account numbers, and other options.

The RA-2400 software has a large help file that can be accessed at any time by selecting "Contents" from the "Help" menu or by pressing the F1 key.

How does RA-2400 connect to a DVS Console?

Remote Access communicates with the Console over the same phone line the Console uses to send communicator reports. Remote Access can also connect to the Console without a telephone line by directly connecting the Computer modem's LINE jack to the Console's T & R Terminals using a telephone cord.

With a telephone line connection (**remote connection**), a special dialing procedure is used. First, Remote Access dials the phone number specified for the Console. Remote Access waits long enough for the phone to ring two or three times, then hangs up. Next, Remote Access waits, then dials again. This second call is answered on the first ring by the Console.

With a direct connection (**local cable connection**), Remote Access prompts the user to place the Console in Test Mode and press the Console's EMERGENCY button to establish the connection.

Once the connection is made, the Console will check if its remote access password matches the calling software's password. If the passwords match, access is granted.

Do I have to be connected to a Console to make programming changes?

Since Remote Access knows the programming structure, you can modify an Account Profile without being connected to a Console. This means you can set all of the values for a specific Console configuration and then connect to a unit and send all of the values that you have set. This is referred to as off-line Console configuration.

How do I change Console settings while on-line?

While on-line with the Console, make any changes to the Account Profile then send the data to change the Console.

Can I make a template with the typical settings for all of my accounts?

Programming "templates" can be created to speed up programming multiple Consoles. Common settings, such as the Central Station telephone number, communicator format, Console and communicator configurations which are shared by all of your accounts can be stored in an Account Profile and used as a template. That template file can be used as a basis for creating each customer Account Profile file. See "Using Profile Copies" in the Help contents for more information on creating a template.

How do I add and remove the program's password?

A password can be set to restrict the RA-2400 to authorized users only. To add a password, select "Change Password..." from the "Options" menu. Enter the password in the "New Password" field. Verify it by entering the password again in "Re-type New Password" and click OK. To remove the password, enter your password in "Old Password", don't enter anything on the "New Password" and "Re-type New Password" fields and press OK.

1.2 SYSTEM REQUIREMENTS

Minimum System Requirements:

- IBM compatible 486 personal computer with 8 Mb RAM
- Windows 95/98 or Windows NT operating system
- VGA monitor
- Name brand modem that is capable of 300 baud (BELL 103 compatible)
- Hard disk drive with 10 Mb available space for the software plus 18K available space for each Account Profile file.
- 1.44 Mb floppy disk drive

Recommended System:

- Pentium or better based personal computer with 16 Mb RAM or more
- Windows 95/98 or Windows NT operating system
- SVGA video card
- Microsoft compatible mouse
- Name brand modem that is capable of 300 baud (BELL 103 compatible)
- Large hard disk drive (1000 Account Profiles use about 20 Mb)
- 1.44 Mb floppy disk drive

Compatible Systems Note:

The software described in this manual supports the programming of a variety of models of Linear's Wireless Security Systems. References in these instructions are focused on the Model DVS-2400.

The programming differences for the other models supported by this software are:

DVS-1200: This model is identical to the DVS-2400 with the limitation of supporting only 12 sensors. Only the first 12 sensors can be programmed in Sections 4.9, 4.13.1, and 4.13.2.

DVS-2408: This model programs the same as the DVS-2400 with the addition of supporting 8 hardwired loops. Hardwired loop programming is described in Section 4.9.

PERS-2400: This model is not a Security System, but a Personal Emergency Reporting System. Refer to the RA-2400/PERS-2400 Programming Reference Guide P/N: 217163 for details on programming this model.

1.3 PROGRAMMING OUTLINE

Use the following programming outline to guide you through the steps required to set up the RA-2400 software and program a DVS-2400 Console. Many of the programming options available in the RA-2400 program can be left in their default settings, and do not need to be changed for most installations.

1. SETUP RA-2400 SOFTWARE

- ◆ Install the software on your computer (Section 1.4).
- ◆ Test your computer's modem (Section 1.5).
- ◆ Start the RA-2400 program (Section 2.1).
- ◆ Set the Communications Setup options (Section 3).

2. CUSTOMIZE AN ACCOUNT PROFILE

- ◆ Open a new Account Profile (Section 4.1).
- ◆ Enter customer information (Section 4.2).
- ◆ Set the Console's access codes (Section 4.3).
- ◆ Set the Console's arm/disarm options (Section 4.4).
- ◆ Set the Console's exit/entry delays (Section 4.5).
- ◆ Set the Console's alarm options (Section 4.6).
- ◆ Set the Console's home-automation options (Section 4.7).
- ◆ Set the Console's audio options (Section 4.8).
- ◆ Enable the Console's communicator and choose a communicator format (Section 4.10).
- ◆ Choose the communicator's account number, telephone numbers, and trouble report routing (Section 4.11).
- ◆ Set the communicator reporting options (Section 4.12).
- ◆ Set the communicator format reporting options (Section 4.13 or 4.14).

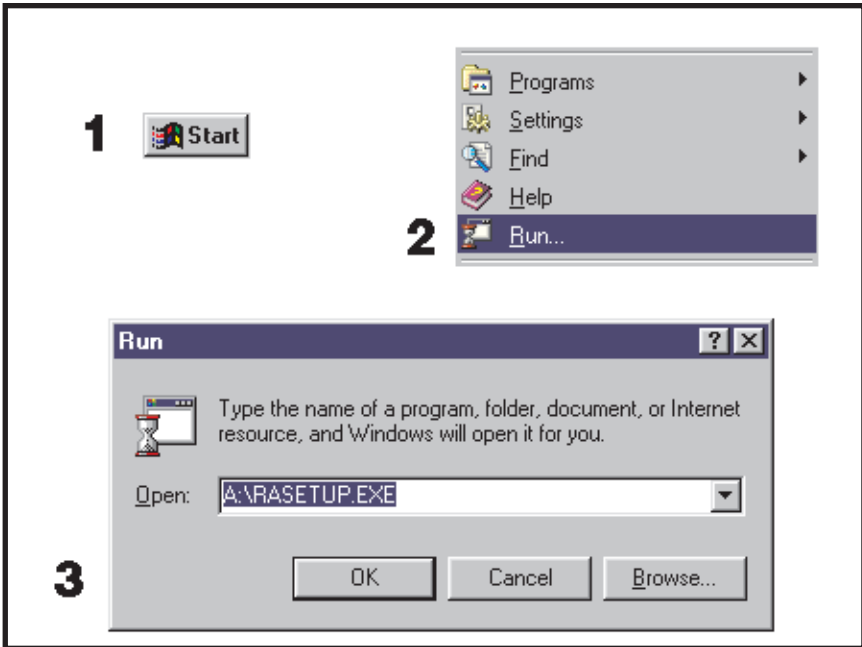
3. PROGRAM THE CONSOLE WITH THE ACCOUNT PROFILE

- ◆ Choose an Account Profile (Section 5.2).
- ◆ Connect to the Console (Section 5.3).
- ◆ Send the data to the Console (Section 5.4).
- ◆ Receive the data from the Console (Section 5.5).
- ◆ Change the Console's Mode (Section 5.6).
- ◆ Disconnect from the Console (Section 5.7).

IMPORTANT:

AFTER ANY PROGRAMMING CHANGES ARE MADE TO A CONSOLE, PERFORM THOROUGH TESTING TO VERIFY THAT THE CONSOLE OPERATES AS INTENDED.

1.4 PROGRAM INSTALLATION



The RA-2400 Remote Access Program software is supplied on a single disk. An installation batch file is included on the program disk. The installation program will create a directory on your hard disk drive. Be sure that you have at least 10 megabytes free on the hard disk for the program and any Account Profile files that you create.

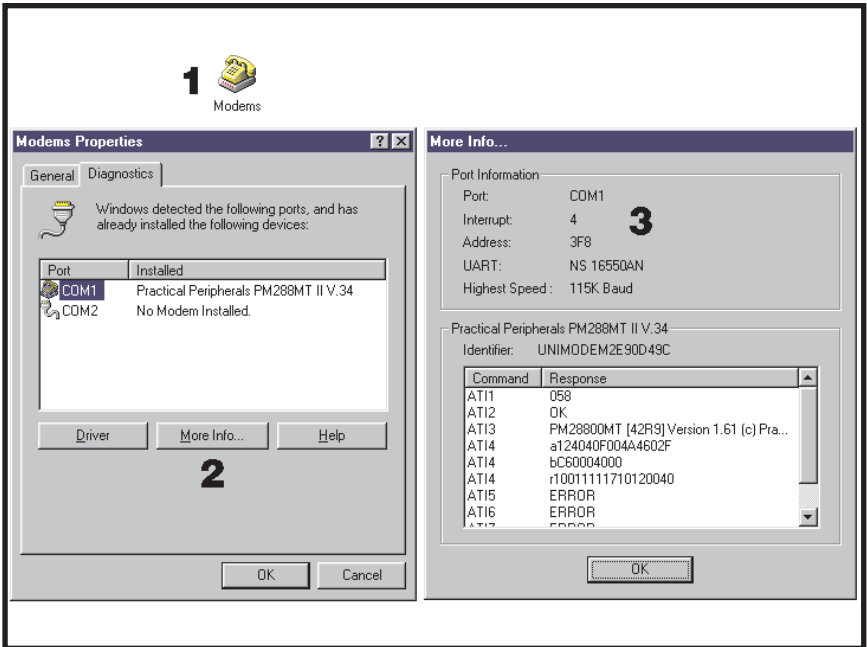
To Install the Remote Access Program:

- ◆ Insert the disk into your computer.
- ◆ Press START, RUN... and BROWSE..., then OPEN the RASETUP.EXE file on the disk.
- ◆ Wait while the install program creates the directory and copies the program files onto the hard disk.
- ☞ *NOTE: If Windows asks whether to replace existing .DLL files, first answer NO. If RA-2400 fails to run, re-install RA-2400 and answer YES to replace existing .DLL files.*
- ◆ Remove the disk and store it in a safe place.

To Remove the Remote Access Program:

- ◆ Press START, SETTINGS, CONTROL PANEL. Double-click on ADD/REMOVE PROGRAMS.
- ◆ Select LINEAR RA2400 and click OK. The program will be removed.

1.5 TESTING THE MODEM



Before you run the Remote Access Program, be sure that the computer is running correctly and that the modem is installed and working properly.

To Test the Modem:

Windows Control Panel can be used to test the modem and determine what COM port it is connected to.

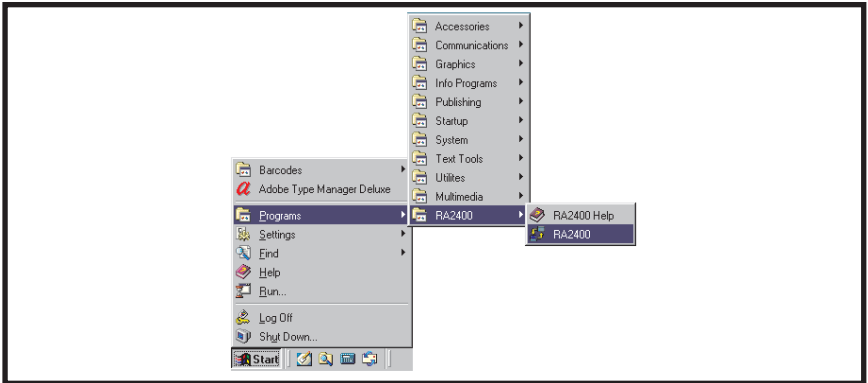
- ◆ Press START, SETTINGS, CONTROL PANEL. Double-click on MODEMS.
- ◆ Verify that a modem is shown in the Modem Properties window.
- ◆ Click on the DIAGNOSTICS tab. The modem installed with the COM port highlighted should be shown.
- ◆ Note the COM port information. It is used when setting COM port in the Communications Setup window (see Section 3.1).
- ◆ Test the modem by pressing the MORE INFO... button. IF THE MODEM IS CONNECTED AND WORKING PROPERLY, THE "MORE INFO" WINDOW WILL DISPLAY DETAILED MODEM INFORMATION. If the modem is not working properly, Windows will notify you.

2. OVERVIEW

2.1	STARTING THE PROGRAM	7
2.2	NEW WINDOW	7
2.3	MENU BAR	8
2.4	ACCOUNT PROFILE WINDOW OVERVIEW	10

☞ *NOTE: Experienced computer or PC users should find that entering data and navigating around the RA-2400 program dialog boxes is similar to most other Windows programs. New users, or users unfamiliar with running Windows applications, should refer to the Windows help file for details on using Windows.*

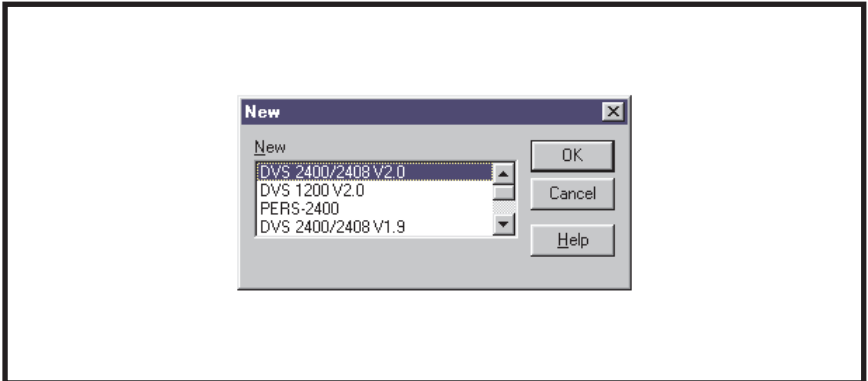
2.1 STARTING THE PROGRAM



To Run the Program:

- ◆ Press START, point to PROGRAMS, RA2400 and click on RA2400.

2.2 NEW WINDOW



PURPOSE:

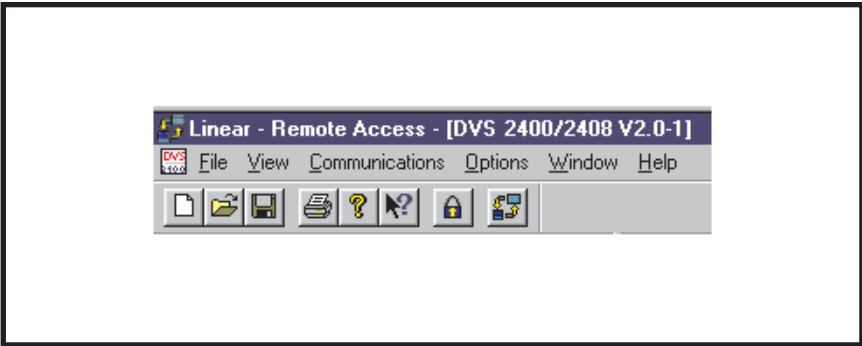
To select an Account Profile template for the type of unit being programmed.

USER RESPONSE:

- ◆ Select DVS-2400/2408 (with the correct Console firmware version number).
- ◆ Press OK.

The RA-2400 program window will appear with a starter template called DVS-2400/2408 Vx.x-1 showing in the workspace. This file can be stored later, under any name, using SAVE AS... in the FILE menu (see Section 2.3).

2.3 MENU BAR



PURPOSE:

To provide access to each of the programs sub-menus.

The sub-menus that can be accessed from this menu are:

File

NEW

To select an Account Profile template for the type of unit being programmed.

OPEN

Loads a saved Account Profile into the RA-2400 workspace. Multiple Account Profiles can be open at the same time in the RA-2400 workspace. They can be arranged in the workspace using the Window menu on the menu bar, or by dragging them around manually.

CLOSE

Closes the active Account Profile. If there were any changes to the file, Windows will ask if you want to save the changes.

SAVE

Saves the active Account Profile to the hard drive, overwriting the existing file.

SAVE AS...

Saves the active Account Profile while giving the option to change the name or location of the file.

PRINT...

Opens the PRINT window to allow printing of the active Account Profile. Resulting printout is the entire content of the Account Profile file in text format.

PRINT PREVIEW

Shows what will be printed on the screen with options to zoom in or print the document.

RECENT FILE LIST

Shows the last four file names (with paths) that were opened in RA-2400. Clicking on a file opens it.

EXIT

Closes the RA-2400 program. If any open Account Profiles have changed, Windows will ask if you want to save them.

2.3 MENU BAR (CONTINUED)

VIEW

TOOL BAR

When checked, the tool bar is displayed. NOTE: The tool bar can be turned into a re-sizable floating tool bar window by dragging it out of its docked location at the top of the workspace. The tool bar accesses many of the popular menu items. Hover the mouse pointer over the tool bar button to see a description of the button.

STATUS BAR

When checked, the status bar is displayed at the bottom of the workspace.

COMMUNICATIONS

SETUP...

Opens the Communication Setup window. Used for setting up the modem and connection type (local or remote).

SEND/RECEIVE...

Opens the Send/Receive window. Used for connecting to a Console to send or receive data or to change the Console's operating mode.

OPTIONS

CHANGE PASSWORD

Opens the Change Password window. Used for changing or removing the password required to enter the RA-2400 program. THIS IS NOT THE REMOTE ACCESS PASSWORD USED TO CONNECT TO THE DVS-2400 CONSOLE.

WINDOW

CASCADE

Arranges all open Account Profile windows layered across the workspace.

TILE

Arranges all open Account Profile windows next to each other in the workspace.

HELP

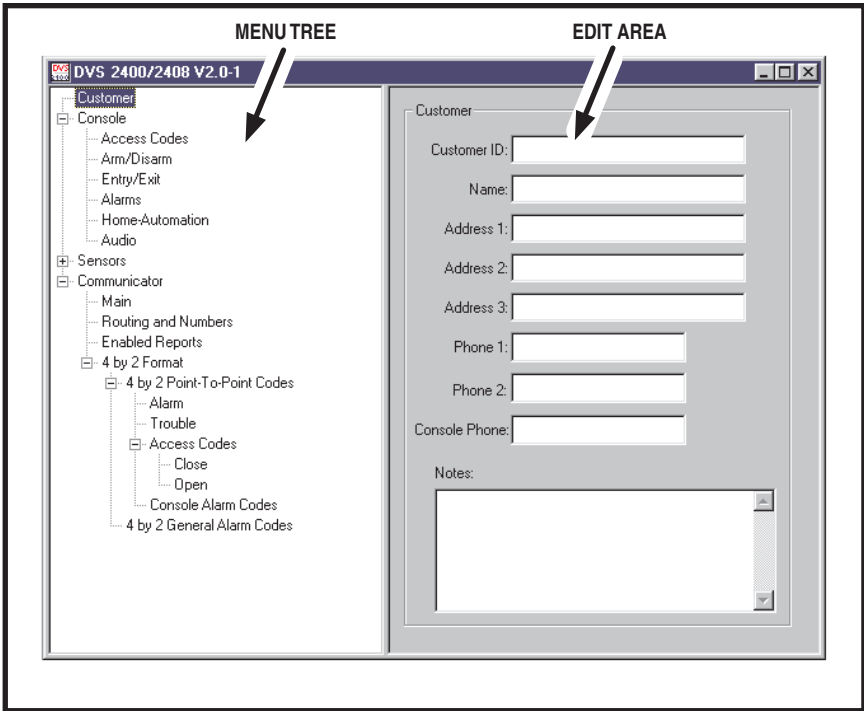
CONTENTS

Opens the help Contents search window. Used for accessing the RA-2400's built-in help file.

ABOUT RA-2400 REMOTE ACCESS

Displays the version number of the RA-2400 software.

2.4 ACCOUNT PROFILE WINDOW OVERVIEW



PURPOSE:

To enter data and make changes to an Account Profile and customize it for a specific installation.

MENU TREE

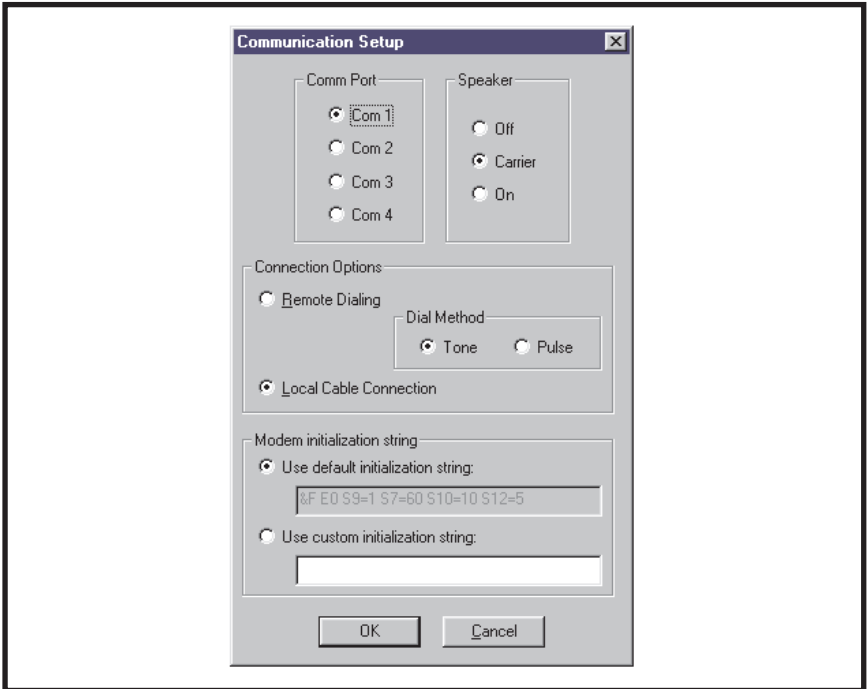
Used for selecting the various data entry fields in the Account Profile. Clicking on the plus (+) symbols expands the branches of the menu tree. Clicking on the minus (-) symbols collapses the menu tree branch. Clicking on an item displays the data entry fields in the edit area or other information.

EDIT AREA

Used for adding and changing the data in the Account Profile. Click on the check boxes, buttons, and enter text and numbers in the data areas to modify the Account Profile.

3. COMMUNICATIONS SETUP

3.1	COM PORT	12
3.2	SPEAKER	12
3.3	CONNECTION OPTIONS	13
3.4	MODEM INITIALIZATION STRING	14



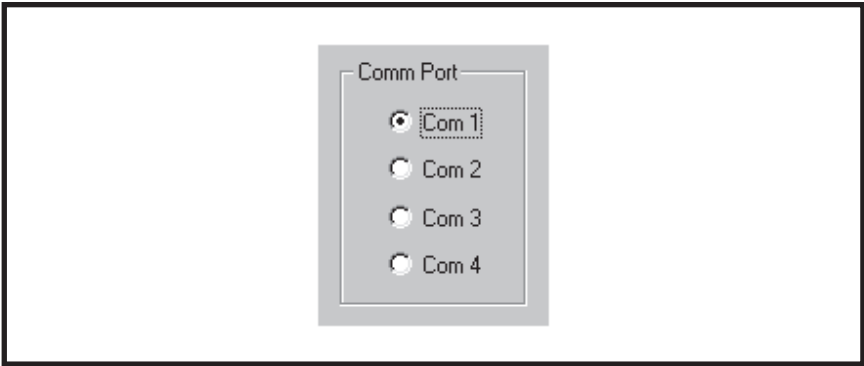
PURPOSE:

The communications setup window sets the COM port for the modem, the modem’s speaker characteristics, type of connection (local or remote), dialing method (tone or pulse), and modem initialization string.

USER RESPONSE:

- ◆ From the **COMMUNICATIONS** menu, select **SETUP...** to view the Communications Setup window.
- ◆ See Sections 3.1 - 3.4 and make any changes as required.
- ◆ After making any changes to the Communication Setup window, click **OK** to accept the changes and close the window.

3.1 COM PORT



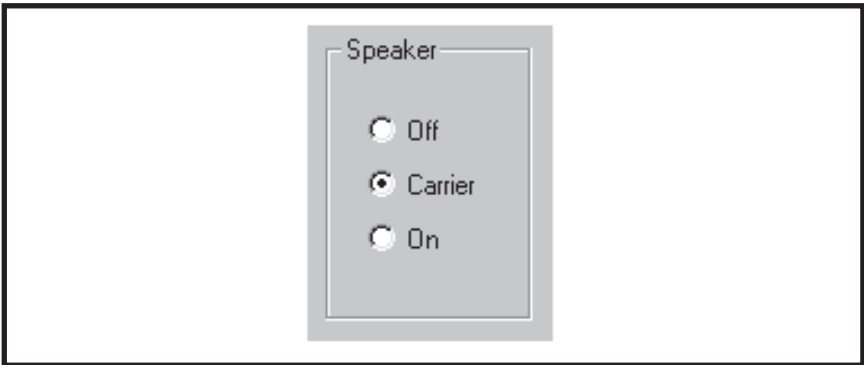
PURPOSE:

To select which communications (COM) port the modem is connected to.

USER RESPONSE:

- ◆ Click on the **COM** port number (1, 2, 3, or 4) that the modem is connected to.
- ☞ *NOTE: See the TESTING THE MODEM Section (1.5) of this manual for determining the proper COM port number.*

3.2 SPEAKER



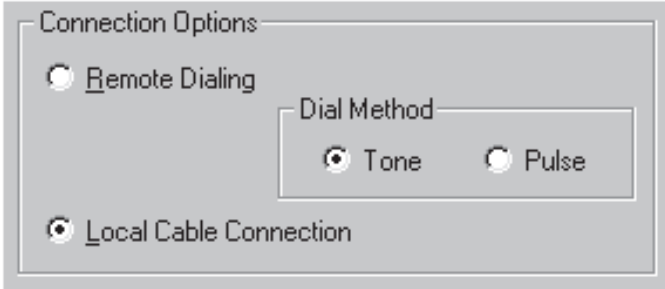
PURPOSE:

To set how the modem's speaker functions before and during communications.

USER RESPONSE:

- ◆ Select **OFF** to silence the modem's speaker at all times.
- ◆ Select **CARRIER** to hear the modem connect and have the speaker silenced when the RA-2400 is connected to the DVS-2400 Console.
- ◆ Select **ON** to hear the modem connect and hear the RA-2400 communicate with the DVS-2400 Console (for testing only).

3.3 CONNECTION OPTIONS

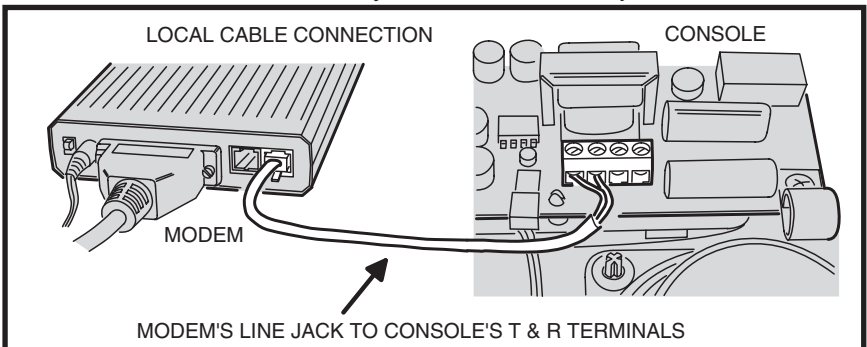


PURPOSE:

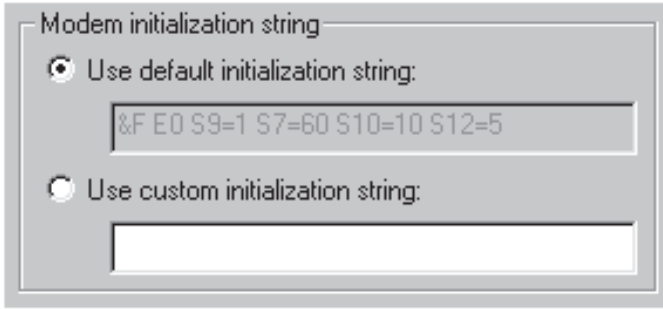
To choose how the modem will connect to the DVS-2400 Console. Remote Dialing dials a telephone number with the method chosen (tone or pulse) to connect with the Console over a standard telephone line. Local Cable Connection does not dial a telephone number, but communicates with the Console wired directly to the modem.

USER RESPONSE:

- ◆ Select **REMOTE DIALING** if the Console is going to be accessed over the telephone line.
- ◆ Select **TONE** or **PULSE** depending on the requirements for your telephone system. NOTE: This only affects Remote Dialing.
- ◆ Select **LOCAL CABLE CONNECTION** if the Console's T & R terminals are connected directly to the modem's LINE jack.




3.4 MODEM INITIALIZATION STRING




PURPOSE:

Used to choose whether the default or a custom initialization “string” is sent to configure the modem (a “string” is a series of characters that are commands for the modem). Modem’s use initialization strings to setup their speed, data type, and other options. The RA-2400 sends the initialization string to the modem before using the modem to connect to the DVS-2400.

 **NOTE:** There are hundreds of models of modems available, each with unique characteristics. Instead of using the default modem string, some modems may perform better with a custom initialization string.

USER RESPONSE:

- ◆ Leave **USE DEFAULT INITIALIZATION STRING** option selected unless you are having trouble connecting with your modem.
- ◆ **IF YOU ARE HAVING TROUBLE CONNECTING WITH YOUR MODEM**, and it tests OK with the Windows modem test diagnostics (see Section 1.5), try using a custom initialization string. Various model modems have different requirements for initialization strings. Refer to your modem’s manual for the required commands to place the modem in 300 BAUD BELL 103 configuration. Two examples are “&F1&N1” and “N0S37=1”. If the initialization string is incorrect, the RA-2400 will display “ERROR WRITING INITIALIZATION STRING”.

 **NOTE:** When entering a custom initialization string, don’t enter the “AT” command. The RA-2400 program will do this automatically.

4. CREATING A CUSTOM ACCOUNT PROFILE

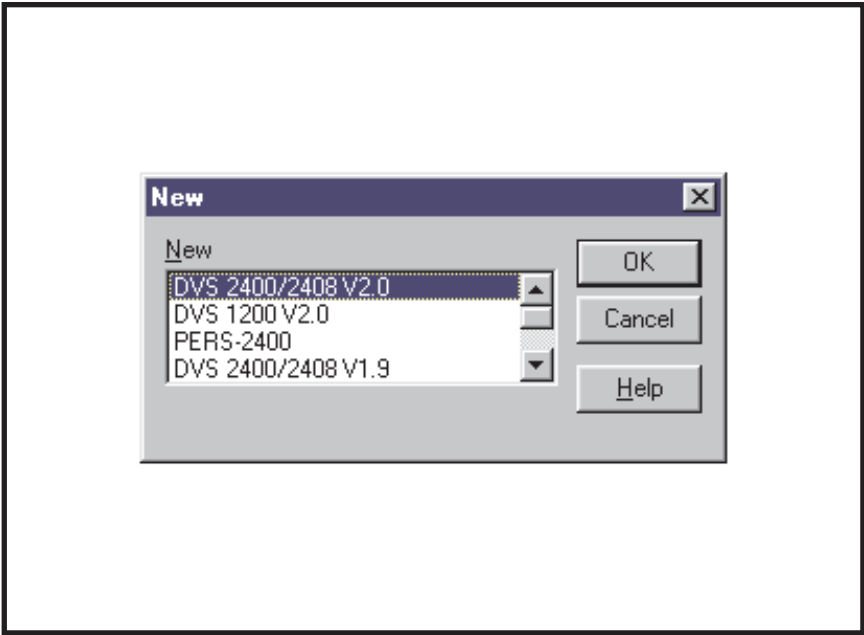
4.1	NEW WINDOW	16
4.2	CUSTOMER INFORMATION	17
4.3	CONSOLE ACCESS CODES	18
4.4	CONSOLE ARM/DISARM.	19
4.5	CONSOLE ENTRY/EXIT	20
4.6	CONSOLE ALARMS	21
4.7	CONSOLE HOME-AUTOMATION OUTPUT	22
4.8	CONSOLE AUDIO	23
4.9	SENSORS	24
4.10	COMMUNICATOR MAIN	26
4.11	COMMUNICATOR ROUTING AND NUMBERS	27
4.12	COMMUNICATOR ENABLED REPORTS	28
4.13	COMMUNICATOR 4 BY 2 FORMAT	29
4.13.1	4 BY 2 POINT-TO-POINT ALARM CODES.	30
4.13.2	4 BY 2 POINT-TO-POINT TROUBLE CODES	31
4.13.3	4 BY 2 POINT-TO-POINT ARMING (CLOSING) CODES.	32
4.13.4	4 BY 2 POINT-TO-POINT DISARMING (OPENING) CODES.	33
4.13.5	CONSOLE ALARM CODES	34
4.13.6	4 BY 2 GENERAL ALARM CODES	35
4.14	ADEMCO CONTACT-ID REPORT CODES	36

Each installation requires an Account Profile. While many items are the same in different Consoles reporting to the same Central Station, some items (account number, customer information, & sensor information) are unique for each installation.

A custom Account Profile is created by editing the DVS-2400 Account Profile template included with the RA-2400 software. The customized profile should then be saved with a unique name for the account and then sent to the DVS-2400 Console.

To provide a clean start. Close any open Account Profiles on the workspace.

4.1 NEW WINDOW



PURPOSE:

To select an Account Profile template for the type of unit being programmed.

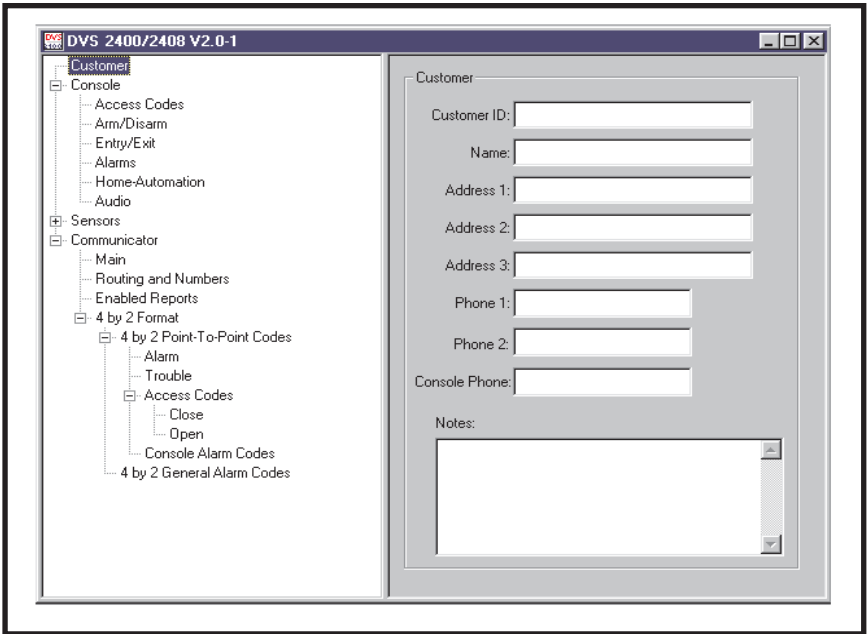
USER RESPONSE:

NEW

- ◆ Click on NEW icon on tool bar or select **NEW** from the **FILE** menu.
- ◆ Select DVS-2400/2408 (with the correct Console firmware version number).
- ◆ Click OK.

The new Account Profile will appear as a starter template called DVS-2400/2408 Vx.x-1 (or -2, -3, etc.) in the workspace.

4.2 CUSTOMER INFORMATION



PURPOSE:

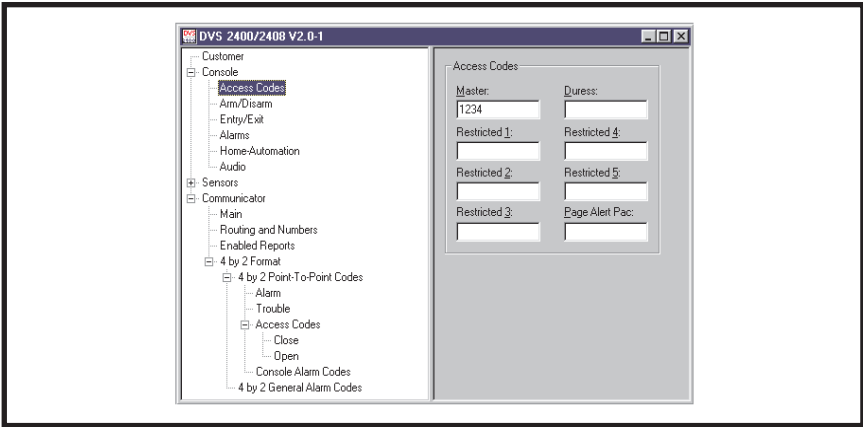
For entering customer information specific to the installation for the Account Profile.

USER RESPONSE:

CUSTOMER

- NOTE: All fields are optional and do not have to be filled in. This information is not sent to the Console.
- ◆ Enter a **CUSTOMER ID** for the installation.
- ◆ Enter the customers name in the **NAME** field.
- ◆ Enter the customers address in **ADDRESS** fields 1, 2, & 3.
- ◆ Enter the customers telephone number(s) in **PHONE** fields 1 & 2.
- ◆ Enter the number of the telephone line that the Console is connected to in the **CONSOLE PHONE** field. This field will show as the telephone number for the account in the Send/Receive window.
- NOTE: **DO NOT** enter any dashes or spaces into the telephone number fields. Enter numbers only.
- ◆ Enter any special information about the customer in the **NOTES** field.

4.3 CONSOLE ACCESS CODES



PURPOSE:

To install a Master Access Code and up to 5 Restricted Access Codes, a Duress Code, and a Page Alert Code.

CODE DEFINITIONS:

MASTER ACCESS CODE

- ◆ Allows arming and disarming the Console. Allows access to all programming options.

RESTRICTED ACCESS CODE

- ◆ Allows arming and disarming the Console. Allows entering and editing Restricted Access Codes.

DURESS ACCESS CODE

- ◆ Allows all options of a Restricted Access Code and causes the Console to report the duress code to the Central Station if programmed to report.

PAGE ALERT CODE

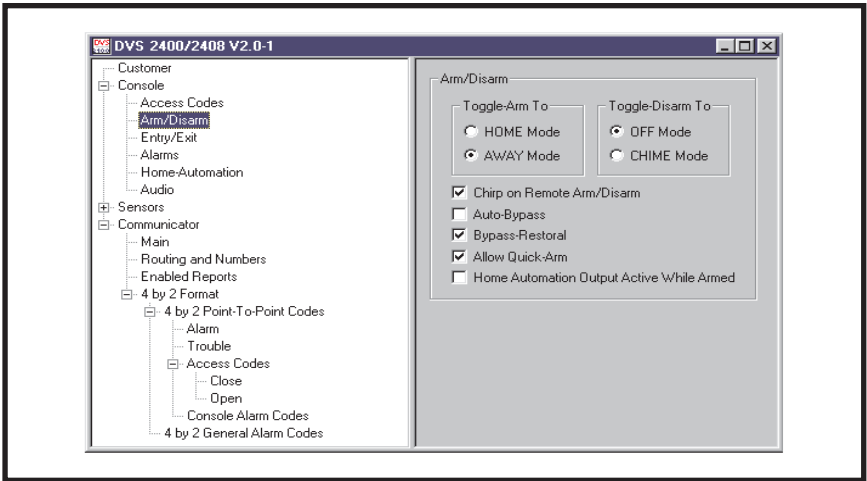
- ◆ Allows all options of a Restricted Access Code and causes the Console to dial the supervisory number (see Section 4.11, Communicator Routing and Numbers).

USER RESPONSE:

ACCESS CODES

- ◆ **MASTER:** When power is first applied to the Console the Master Access Code is "1234". Enter any combination of 1 to 5 digits (3 to 5 digits recommended) for the Master Access Code.
- ◆ **RESTRICTED:** Enter any combination of 1 to 5 digits (3 to 5 digits recommended) for Restricted Access Codes 1-5.
- ◆ **DURESS:** Enter any combination of 1 to 5 digits (3 to 5 digits recommended) for the Duress Code. The Duress Code should be 2 or more digits different than any other user code to help minimize accidental activation.
- ◆ **PAGE ALERT:** Enter any combination of 1 to 5 digits (3 to 5 digits recommended) for the Page Alert Code.

4.4 CONSOLE ARM/DISARM



PURPOSE:

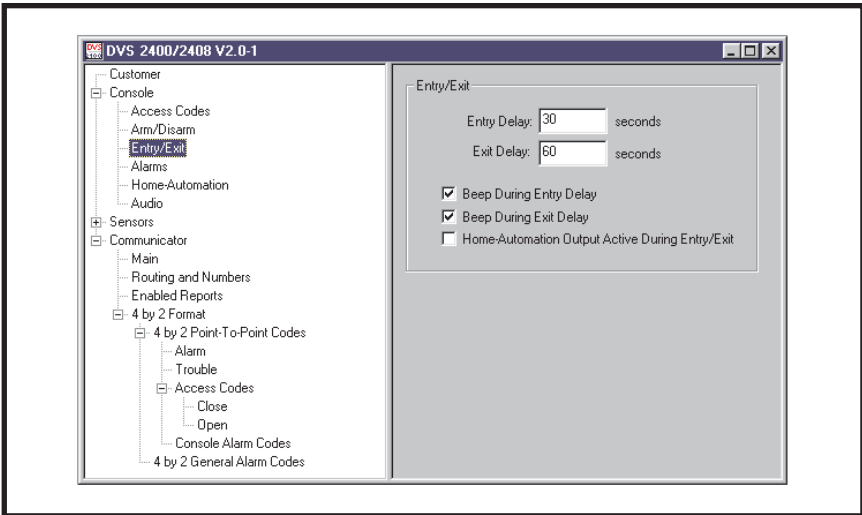
To select which modes any remote arm/disarm transmitters will switch to. Also for selection of five arm/disarm options.

USER RESPONSE:

ARM/DISARM

- ◆ **TOGGLE-ARM TO:** Select either HOME or AWAY to choose the mode that any remote arm/disarm transmitters will arm the Console to.
- ◆ **TOGGLE-DISARM TO:** Select either OFF or CHIME to choose the mode that any remote arm/disarm transmitters will disarm the Console to.
- ◆ **CHIRP ON REMOTE ARM/DISARM:** When arming with the portable remote control, if this box is checked the Console will “chirp” once when armed, twice when disarmed, and three times when arming with sensors bypassed. Un-check this box to silence the “chirps”.
- ◆ **AUTO-BYPASS:** If this box is unchecked, the user must manually bypass any open sensors when the system is armed. If arming is attempted with open sensors, the Console will sound five two-tone beeps and will not arm. Arming to the same mode again within five seconds will bypass any open sensors and arm the Console. Check this box and the Console will automatically bypass any open sensors when the system is armed.
- ◆ **BYPASS-RESTORAL:** Bypassed sensors are ignored by the Console and cannot cause an alarm. If this box is checked, the Console will automatically restore (remove the bypass from) any bypassed sensor when the sensor closes. After it’s restored, the sensor is ready to cause an alarm the next time it is opened. Un-check this box to not automatically restore sensors that close.
- ◆ **ALLOW QUICK-ARM:** If this box is checked, it allows the Console to be armed by holding down a mode key for two seconds. Un-check this box and an access code must be entered before pressing the mode buttons.
- ◆ **HOME AUTOMATION OUTPUT ACTIVE WHILE ARMED:** If this box is checked, the Console’s Automation Output will activate when the system is armed. Un-check this box to disable this feature.

4.5 CONSOLE ENTRY/EXIT



PURPOSE:

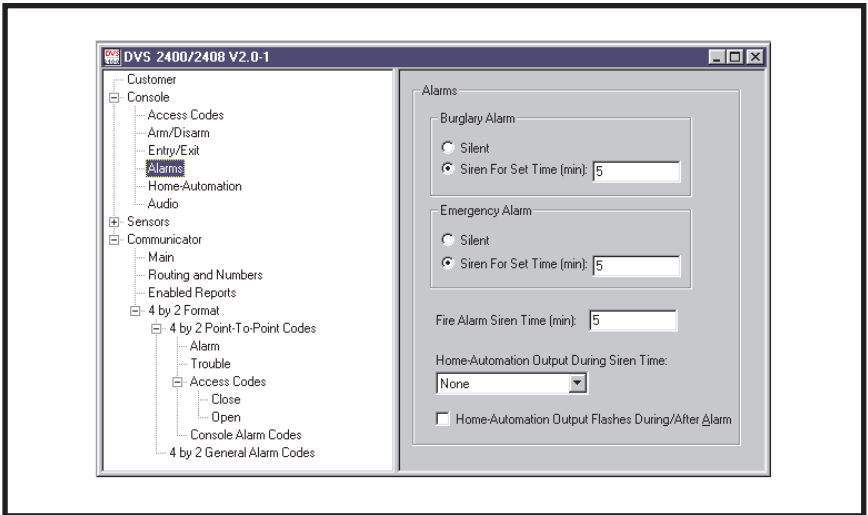
To select delay times and other options for the Console's exit and entry delays.

USER RESPONSE:

ENTRY/EXIT

- ◆ **ENTRY DELAY:** To change the entry delay, enter a delay time from 20 to 255 seconds.
- ◆ **EXIT DELAY:** To change the exit delay, enter a delay time from 20 to 255 seconds.
- ◆ **BEEP DURING ENTRY DELAY:** With this box checked, beeps will sound during the entry delay. Un-check this box to silence the beeps during the entry delay.
- ◆ **BEEP DURING EXIT DELAY:** With this box checked, beeps will sound during the exit delay. Un-check this box to silence the beeps during the exit delay.
- ◆ **HOME-AUTOMATION OUTPUT ACTIVE DURING ENTRY/EXIT:** With this box checked, the home-automation output will be active during the entry/exit delay. Un-check this box to disable this feature.

4.6 CONSOLE ALARMS



PURPOSE:

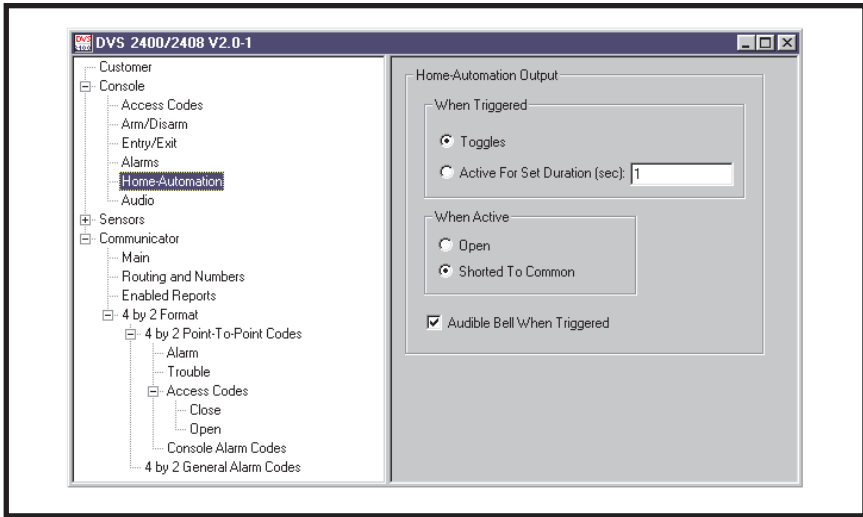
For setting the way the burglary, emergency and fire sirens work. Also sets the options for the home-automation output during and after alarms.

USER RESPONSE:

ALARMS

- ◆ **BURGLARY ALARM:** Select **SILENT** to disable the burglary siren or select **SIREN FOR SET TIME** for a timed siren after activation. With timed siren selected, enter the length of time (from 1 to 30 minutes) for the burglary siren to run.
 - ◆ **EMERGENCY ALARM:** Select **SILENT** to disable the emergency siren or select **SIREN FOR SET TIME** for a timed siren after activation. With timed siren selected, enter the length of time (from 1 to 30 minutes) for the emergency siren to run.
 - ◆ **FIRE ALARM:** Enter the length of time (from 1 to 30 minutes) for the fire siren to run in the **FIRE ALARM SIREN TIME** area.
 - ◆ **HOME-AUTOMATION OUTPUT DURING SIREN TIME:** Select **NONE**, **FLASH**, or **ACTIVE** from the drop-down menu to choose the way the home-automation output functions while the siren is running.
 - ◆ **HOME-AUTOMATION OUTPUT FLASHES DURING/AFTER ALARM:** With this box checked, the home-automation output will flash during and after an alarm until the Console is disarmed.
- ☞ **NOTE:** *The home-automation output will activate steady if the above option is set to ACTIVE.*

4.7 CONSOLE HOME-AUTOMATION OUTPUT



PURPOSE:

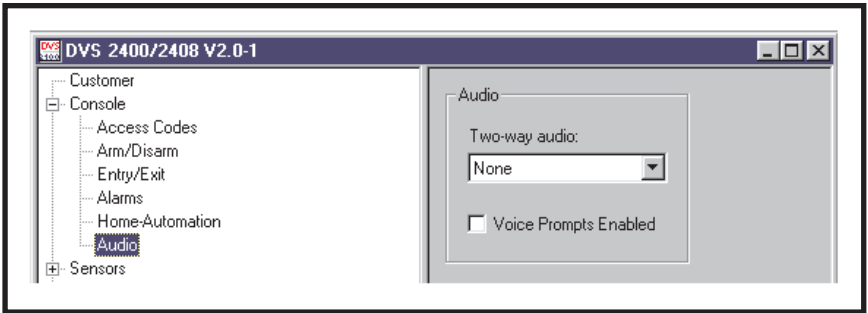
For setting the way the home-automation output functions.

USER RESPONSE:

HOME AUTOMATION-OUTPUT

- ◆ **WHEN TRIGGERED:** Select **TOGGLES** to cause the home-automation output to switch between on & off with each activation. Select **ACTIVE FOR SET DURATION** for a timed home-automation output and enter the length of time 1-2500 (in seconds) for the output to activate.
- ◆ **WHEN ACTIVE:** Select **OPEN** to have the home-automation minus terminal float when the output is active. Select **SHORTED TO COMMON** to have the home-automation minus terminal switch to common ground when the output is active.
- ◆ **AUDIBLE BELL WHEN TRIGGERED:** With this box checked, the Console will sound a “bing” when the home-automation output is activated. Un-check this box to have the home-automation output activate silently.

4.8 CONSOLE AUDIO



PURPOSE:

To select how the Voice Board operates. **NOTE: The Model VB-2 (for 2-way audio) or VB-3 Voice Board must be installed to use these options.** Selects the audio mode for monitoring with the Console's microphone and communicating through the Console's speaker to the subscriber. Controls the human voice prompts from the Voice Board.

With 2-way Audio enabled, after the Central Station operator acknowledges the communicators report, the Console will stop its siren and switch to the selected audio mode for 90 seconds.

USER RESPONSE:

AUDIO

- ◆ Click the arrow to show a list of settings for Two-way Audio and select the desired mode.

NONE: Audio Board will not report as an audio account to the Central Station. No audio monitoring will occur.

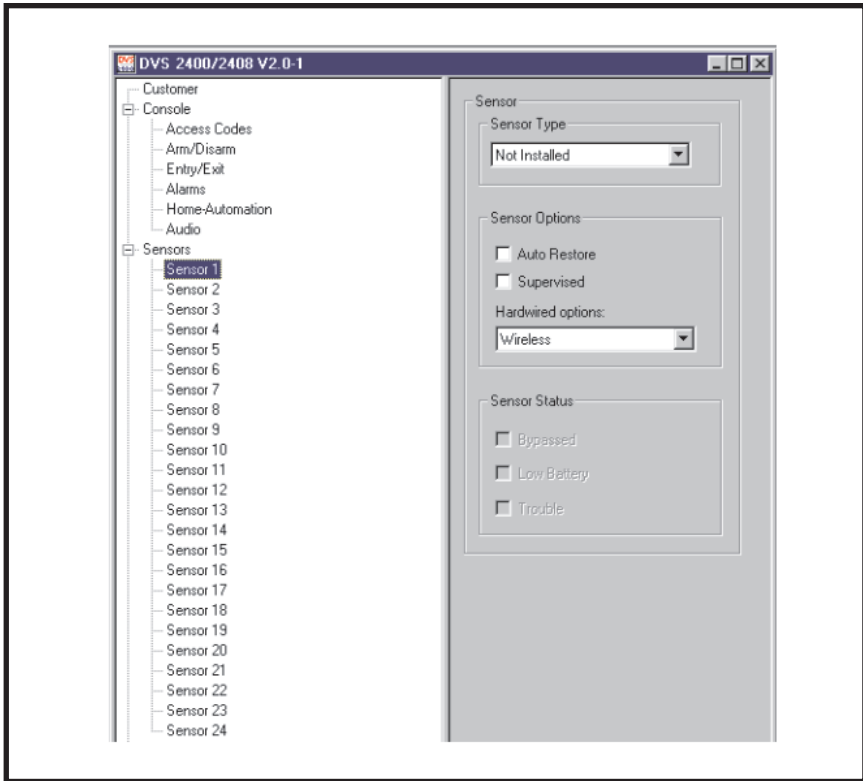
LISTEN-ONLY: The operator will be able to hear sound from the Console but will not be able to talk through the Console's speaker. Pressing "9" on a telephone connected to the line disconnects the call (press any key but "9" to extend the time 90 seconds).

TWO-WAY MANUAL: The operator will be able to hear sound from the Console and will be able to talk through the Console's speaker. The operator can switch from listen to talk by pressing "1", or switch from talk to listen by pressing "3" on a telephone connected to the line. Pressing "9" disconnects the call (press any key but "9" to extend the time 90 seconds).

TWO-WAY DUPLEX: The operator will be able to hear sound from the Console and will be able to talk through the Console's speaker. The audio board will listen until the operator speaks, then the voice activation will switch the voice board to talk as long as the operator speaks. The operator can still switch from listen to talk manually by pressing "1", or switch from talk to listen by pressing "3" on a telephone connected to the line (with increased volume). Pressing "8" returns to two-way duplex. Pressing "9" disconnects the call. Press any key but "9" to extend the time 90 seconds.

- ◆ Check the **VOICE PROMPTS ENABLED** box to have the Console announce system events with a digitally synthesized human voice.

4.9 SENSORS



PURPOSE:

To display and edit sensors installed in the Console's memory. Up to 24 sensors may be installed, each with its own type, restore and supervision options. The status of the sensor selected is also displayed.

NOTE: To display and edit sensors installed in the Console, the sensor data must first be received from the Console (see Section 5.5).

USER RESPONSE:

SENSOR TYPE

- ◆ Click on the sensor in the menu tree to view it.
- ◆ View or edit the **SENSOR TYPE**. The sensor type options are:
 - NOT INSTALLED:** No sensor has been stored in this sensor location. Also can be used to remove a sensor from the Console's memory. Sensors cannot be added with this menu.
 - HOME AUTOMATION:** Sensor will trigger the Console's home-automation output.
 - EMERGENCY:** Sensor will trigger the emergency siren and report the emergency code to the Central Station.
 - POLICE:** Sensor will trigger the silent panic alarm and report the police code to the Central Station.
 - FIRE:** Sensor will trigger the fire siren and report the fire code to the Central Station.

4.9 SENSORS (CONTINUED)

PERIMETER: Sensor will instantly trigger the burglary siren and report the burglary code to the Central Station in Home or Away Mode. Sensor will sound chime in Chime Mode.

ENTRY/EXIT: Sensor uses the exit/entry delay and can trigger the burglary siren and report the burglary code to the Central Station in Home or Away mode. Sensor will sound chime in Chime Mode.

INTERIOR: Sensor is only active in the Away Mode. It will instantly trigger the burglary siren and report the burglary code to the Central Station if triggered before an entry/exit sensor. Causes a delayed alarm if activated during the entry delay.

CHIME: Sensor will sound chime in all modes.

ARM/DISARM + HOME AUTO: The left button on a 2-button sensor will arm/disarm the Console. The right button on a 2-button sensor activates the home-automation output. Pressing both buttons triggers the emergency siren.

ARM & DISARM: The left button on a 2-button sensor will arm the Console. The right button on a 2-button sensor will disarm the Console. Pressing both buttons triggers the emergency siren.

ENVIRONMENTAL: Sensor is always armed in all modes. Causes a local annunciation when triggered.

KEYPAD: Reserved for wireless keypads used with the Console.

INTERIOR HOME: Sensor allows interior zones to trigger an alarm. This will generally be used with PIRs that are not in normal nighttime mode.

SENSOR OPTIONS

- ◆ View or edit the **SENSOR OPTIONS**. These options are automatically set when the sensor is programmed into the Console. The sensor options are:

AUTO RESTORE: This box should be checked for auto restoring sensors that only send alarm transmissions. The Console will automatically restore the “open” sensor.

SUPERVISED: This box should be checked for all sensors that send periodic status reports. DXT sensors do not send periodic status reports. **REMOVE THE CHECK FROM THIS BOX IF A MODEL DXT SENSOR HAS BEEN PROGRAMMED INTO THIS SENSOR LOCATION** or if you don't want supervision for that sensor. This will keep the Console TROUBLE indicator from lighting due to missing status reports from that sensor.

- ⓘ **NOTE:** *The sensor can still report a low battery condition this will cause the Console's BATTERIES indicator to flash.*

HARDWIRED OPTIONS: For Model DVS-2408 only. Selects which hardwired loop (1-8) is assigned to the sensor number selected. For non-hardwired sensors, this selection should be set to **WIRELESS**.

SENSOR STATUS

- ◆ View the **SENSOR STATUS** to see the condition of the sensor selected. The sensor status conditions are:

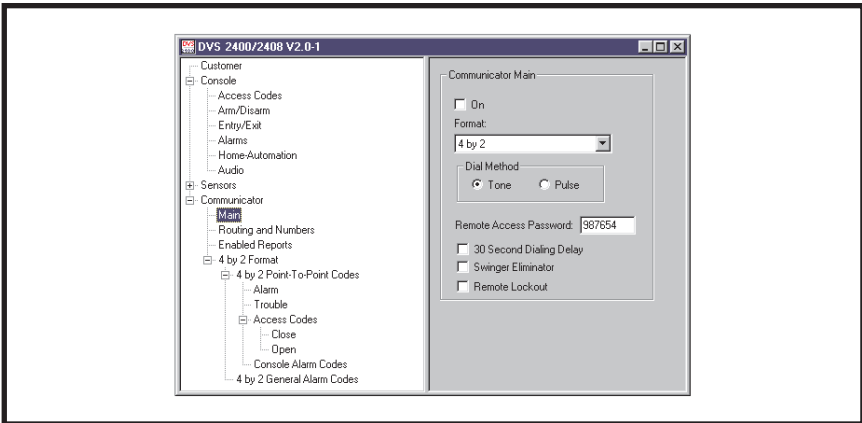
BYPASSED: The Console was armed with this sensor open. It is currently bypassed and cannot cause an alarm.

LOW BATTERY: The sensor has sent a low battery signal to the Console. Replace the sensor's battery.

TROUBLE: The Console has not received a status report from this sensor in 8 hours. Sensor may have been out of range of the Console's receiver, or the sensor may be non-functional.

- ⓘ **NOTE:** *After any changes are made to the sensor type or sensor options, test the sensor to verify proper operation. Testing the “repaired” transmitter will reset the TROUBLE indicator.*

4.10 COMMUNICATOR MAIN



PURPOSE:

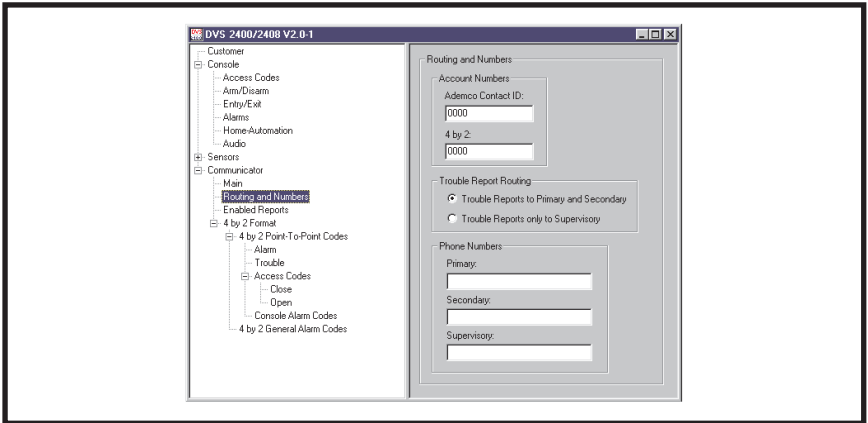
For configuring the Console's communicator format, dialing method, remote access password, dialing delay, and auto answer options.

USER RESPONSE:

COMMUNICATOR MAIN

- ◆ Check the **ON** box to enable the communicator in the Console.
- ☞ **NOTE:** You may want to turn the communicator off while testing the system to prevent the Console from trying to dial out when it is not connected to a telephone line.
- ◆ **FORMAT:** Select either **4 BY 2** or **ADEMCO CONTACT ID** for the communicator format depending on the Central Station's requirements.
- ◆ **DIAL METHOD:** Select either **TONE** or **PULSE** dialing for the Console.
- ◆ **REMOTE ACCESS PASSWORD:** Enter a six-digit password. This is the password required to connect to the Console with the RA-2400 program. The default password is "987654". **DO NOT FORGET THIS PASSWORD, LOCAL OR REMOTE PROGRAMMING ACCESS TO THE DVS-2400 IS IMPOSSIBLE WITHOUT IT.**
- ◆ **30 SECOND DIALING DELAY:** Check this box to cause a 30 second delay before the communicator starts to dial after an alarm. This gives the subscriber time to cancel a Central Station report before the unit dials out.
- ◆ **SWINGER ELIMINATOR:** Check this box to limit the maximum number of Central Station burglary reports to five per arming period. This will not effect the 24-hour zones (fire, panic, and emergency).
- ◆ **REMOTE LOCKOUT:** Check this box to disable the Console's telephone ring detection feature. This keeps the Console from automatically answering the phone. Even if this box is checked, the Console can still be programmed by placing the Console into Test Mode and forcing the Console to answer by pressing the EMERGENCY button while the phone is ringing.

4.11 COMMUNICATOR ROUTING AND NUMBERS



PURPOSE:

For configuring the Console's communicator account number, trouble report routing, and telephone numbers.

USER RESPONSE:

ACCOUNT NUMBERS

- ◆ Enter a four digit account number for the communicator format used.

TROUBLE REPORT ROUTING

- ◆ Select **TROUBLE REPORTS TO PRIMARY AND SECONDARY** to have trouble reports routed to the primary number for five attempts, then to the secondary number for five attempts before re-trying. Select **TROUBLE REPORTS ONLY TO SUPERVISORY** to have trouble reports routed to the supervisory number only (don't select this option if the page alert feature is being used).

NOTE: This does not effect emergency reports which are always routed to the primary or secondary telephone numbers.

PHONE NUMBERS

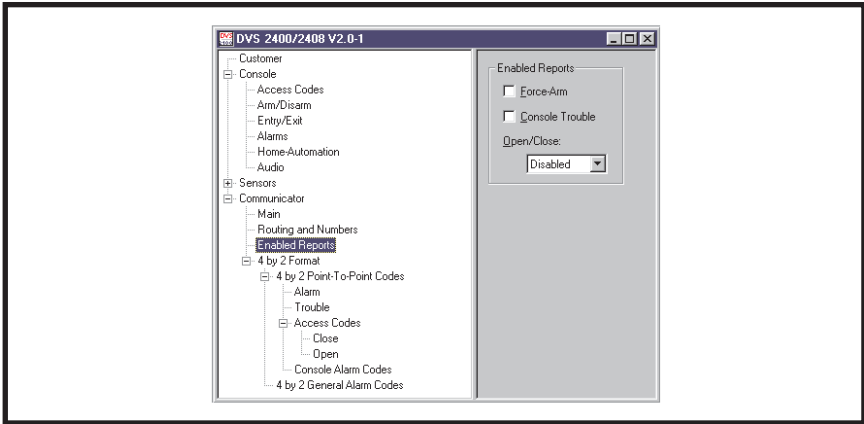
Telephone numbers can be up to 20 digits long. DO NOT enter any dashes or spaces into the telephone number fields. The “#” symbol inserts a 1-second delay, the “~” symbol inserts a 5-second delay.

NOTE: If no telephone numbers are entered, the Console will not report.

- ◆ **PRIMARY:** Enter the correct telephone number to connect the Central Station receiver.
- ◆ **SECONDARY:** Enter the correct backup telephone number to connect the Central Station receiver.
- ◆ **SUPERVISORY:** For trouble reports: Enter the correct telephone number to connect the Central Station receiver for supervisory reports. For Page Alert: Enter the pager telephone number and the numerical message (up to 20 digits total) into the **SUPERVISORY** area.

TIP: Call the pager number and measure the time between placing the call and the prompt to key-in the pager message. Use this time measurement to choose the special characters (# or ~) to insert a delay between the pager telephone number and pager message. NOTE: Many pager companies require a pound sign (#) to end the message (a pound sign at the end of the page alert message is treated as the # key, not a delay) Example with a 7-second delay and pound sign end: 5551234~##07734#

4.12 COMMUNICATOR ENABLED REPORTS



PURPOSE:

For configuring the Console condition reporting options.

USER RESPONSE:

ENABLED REPORTS

- ◆ **FORCE-ARM:** Check this box to cause the communicator to report arming of the Console to Away Mode with an open and bypassed sensor.
- ◆ **CONSOLE TROUBLE:** Check this box to report low Console backup battery and Console backup battery restoration (charged after being low) conditions.
- ◆ **OPEN/CLOSE:** Select an option for the Console's open (disarming) and close (arming) reporting:

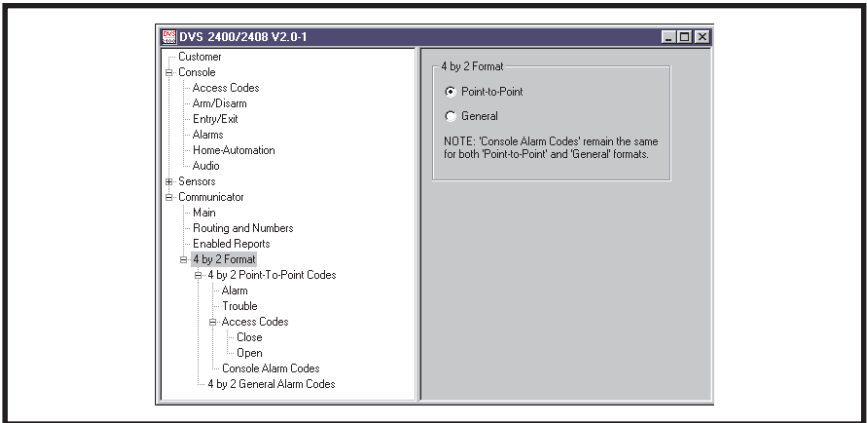
DISABLED: Select this option for no open/close reports.

ENABLED: Select this option for open/close reports when the system is armed or disarmed by any user's access code.

MASTER ONLY: Select this option for open/close reports *only* when the system is armed or disarmed using the master access code.

BY OPENIN CLOSIN REPORT CODES		
ACCESS CODE	BY CLOSIN ARMIN CODE	BY OPENIN DISARMIN CODE
MASTER ACCESS CODE	74	82
RESTRICTED ACCESS CODE #1	75	83
RESTRICTED ACCESS CODE #2	76	84
RESTRICTED ACCESS CODE #3	77	85
RESTRICTED ACCESS CODE #4	78	86
RESTRICTED ACCESS CODE #5	79	87
REMOTE/HARDWIRE ARM & QUICK ARM	81	89

4.13 COMMUNICATOR 4 BY 2 FORMAT



NOTE: Section 4.13 pertains to the 4 by 2 communicator format only.

PURPOSE:

For configuring how the 4 by 2 format will report to the Central Station. General reporting or Point-to-Point reporting methods are available for the 4 by 2 format.

GENERAL REPORTING: General reporting can send five report codes for sensors: **FIRE**, **EMERGENCY**, **POLICE**, **BURGLARY** and **TROUBLE**. General reporting does not indicate which sensor caused the report.

POINT-TO-POINT REPORTING: Point-to-Point reporting sends each sensor/zone number with a unique **ALARM** code and **TROUBLE** code.

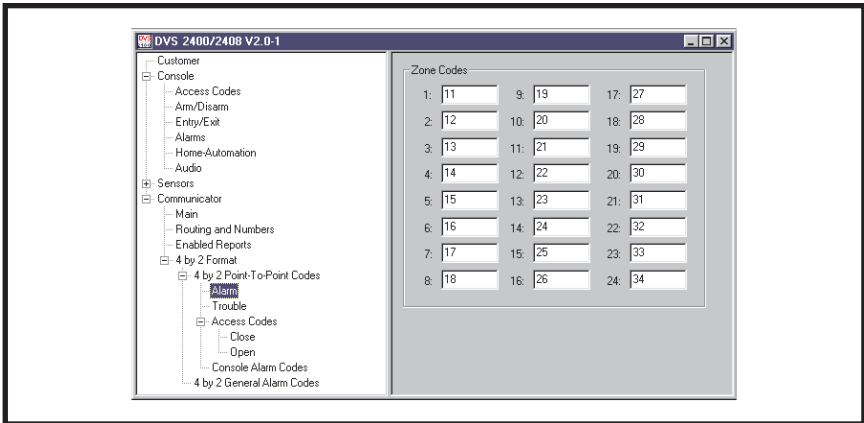
NOTE: With either reporting method, the Console alarm codes are the same (see Section 4.13.5).

USER RESPONSE:

4 BY 2 FORMAT

- ◆ Select **POINT-TO-POINT** to have the Console's communicator send 4 by 2 Point-to-Point report codes. Select **GENERAL** to have the Console's communicator send only the five 4 by 2 General report codes.

4.13.1 4 BY 2 POINT-TO-POINT ALARM CODES



PURPOSE:

To view and edit the 24 sensor/zone alarm report codes.

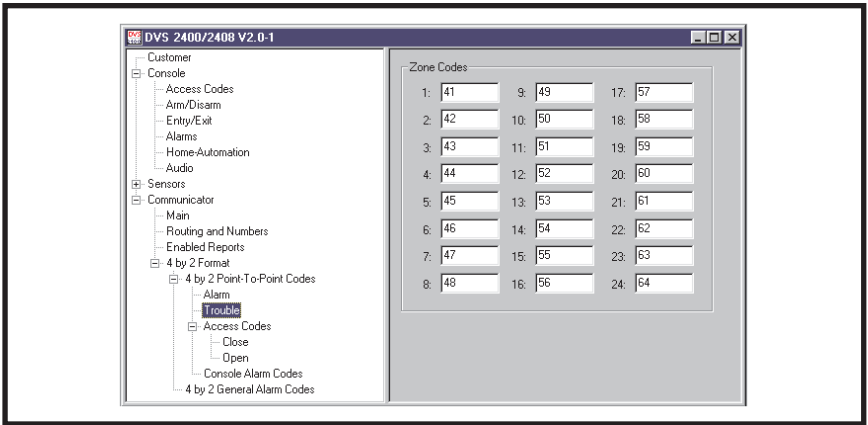
- NOTE: 4 by 2 Point-to-Point Reporting must be selected (see Section 4.13) for these codes to report.

USER RESPONSE:

ZONE CODES

- ◆ Enter a new two-digit alarm code for any sensor/zone that needs to be changed.
- NOTE: Entering a "0" for an alarm code will prevent that zone from reporting.

4.13.2 4 BY 2 POINT-TO-POINT TROUBLE CODES



PURPOSE:

To view and edit the 24 sensor/zone trouble report codes.

NOTE: 4 by 2 Point-to-Point Reporting must be selected (see Section 4.13) for these codes to report.

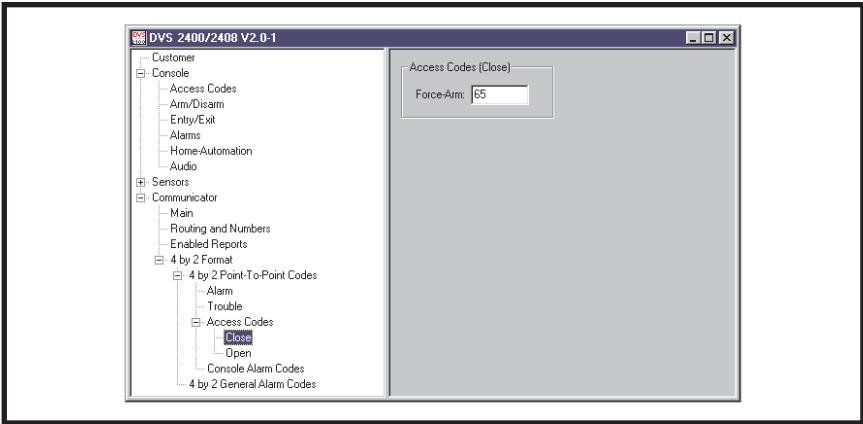
USER RESPONSE:

ZONE CODES

◆ Enter a new two-digit trouble code for any sensor/zone that needs to be changed.

NOTE: Entering a "0" for a trouble code will prevent that zone from reporting.

4.13.3 4 BY 2 POINT-TO-POINT ARMING (CLOSING) CODES



PURPOSE:

To view and edit the force arming report code. This report is sent when force arm is enabled (Section 4.12) and the system is armed with any open sensors that have been bypassed.

NOTE: With either reporting method, the force arming code is the same.

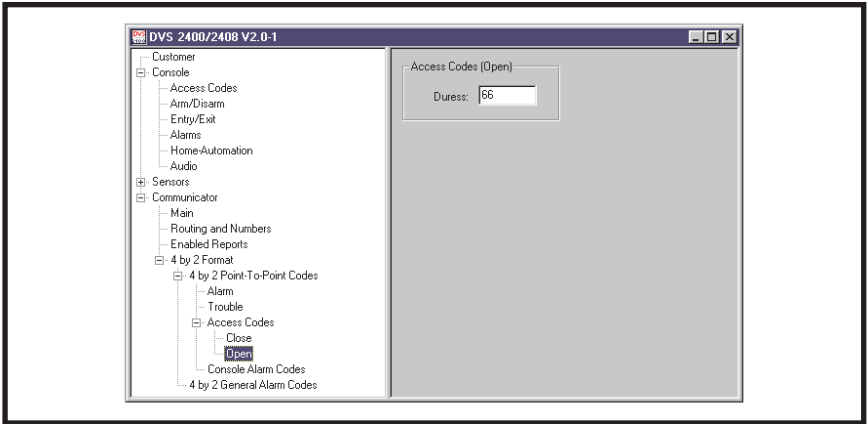
USER RESPONSE:

ACCESS CODES (CLOSE)

◆ **FORCE-ARM:** Enter a new two-digit force arming code if it needs to be changed.

NOTE: Entering a "0" for a force arming code will prevent it from reporting.

4.13.4 4 BY 2 POINT-TO-POINT DISARMING (OPENING) CODES



PURPOSE:

To view and edit the duress report code. This report is sent when the system is armed or disarmed using the duress access code.

NOTE: With either reporting method, the duress code is the same.

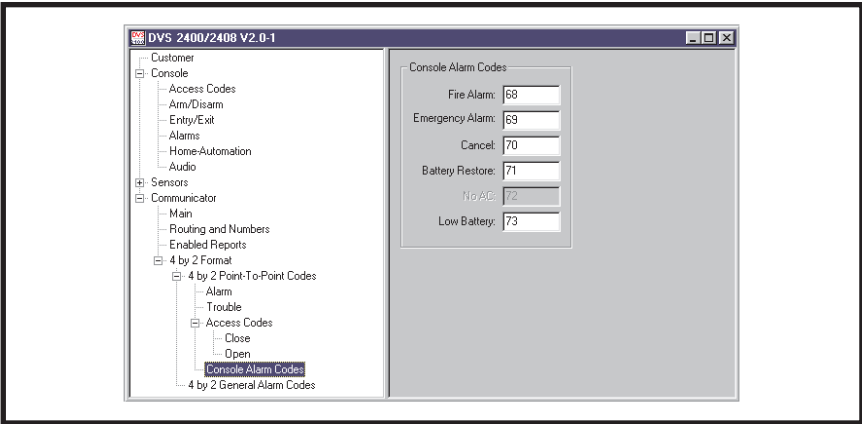
USER RESPONSE:

ACCESS CODES (OPEN)

◆ **DURESS:** Enter a new two-digit duress code if it needs to be changed.

NOTE: Entering a "0" for a duress code will prevent it from reporting.

4.13.5 4 BY 2 CONSOLE ALARM CODES



PURPOSE:

To view and edit the five Console report codes. These codes are sent for Console events such as the Console emergency button, fire button, Console low battery and battery restore. The cancel report occurs when the Console is disarmed during an alarm.

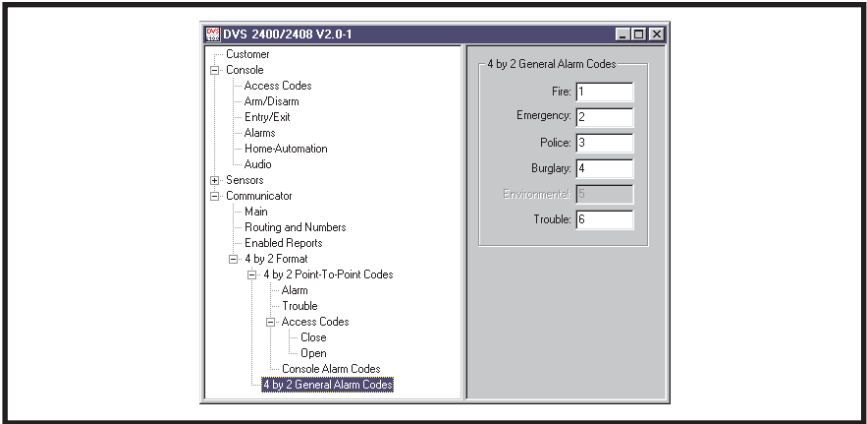
- NOTE: These report codes are sent for both 4 by 2 General and 4 by 2 Point-to-Point Reporting.

USER RESPONSE:

CONSOLE ALARM CODES

- ◆ Enter a new two-digit report code for any Console event that needs to be changed.
- NOTE: Entering a "0" for a report code will prevent that event from reporting.

4.13.6 4 BY 2 GENERAL ALARM CODES



PURPOSE:

To view and edit the four general alarm codes and the general trouble code.

☞ **NOTE:** 4 by 2 General Reporting must be selected (see Section 4.13) for these codes to report.

USER RESPONSE:

4 BY 2 GENERAL ALARM CODES

◆ Enter a new one or two-digit report code for any general alarm code that needs to be changed.

☞ **NOTE:** Entering a "0" for an alarm code will prevent that event from reporting.

4.14 ADEMCO CONTACT-ID REPORT CODES

The Ademco Contact-ID reporting codes are pre-defined and cannot be changed. These reporting codes are provided as reference. The Ademco Contact-ID extended report codes indicate the sensor number that triggered the event. Console events report with a "000" extended code.

NOTE: Ademco Contact-ID Reporting must be selected for these codes to report (see Section 4.10).

ADEMCO CONTACT-ID REPORT CODES		
EVENT	ALARM CODE	EXTENDED CODE
SENSOR EMERGENCY	E120	C0xx
CONSOLE EMERGENCY	E120	C026
SENSOR FIRE	E111	C0xx
CONSOLE FIRE	E110	C025
BURGLARY ALARM	E130	C0xx
SILENT PANIC	E122	C0xx
FORCE ARM	E574	C000
DURESS	E121	C000
CANCEL	E406	C000
SENSOR LOW BATTERY	E384	C0xx
SENSOR STATUS TROUBLE	E381	C0xx
CONSOLE LOW BATTERY	E302	C000
CONSOLE BATTERY RESTORE	R302	C000
2-WAY AUDIO	E606	C000
xx = SENSOR NUMBER IN EXTENDED REPORT		

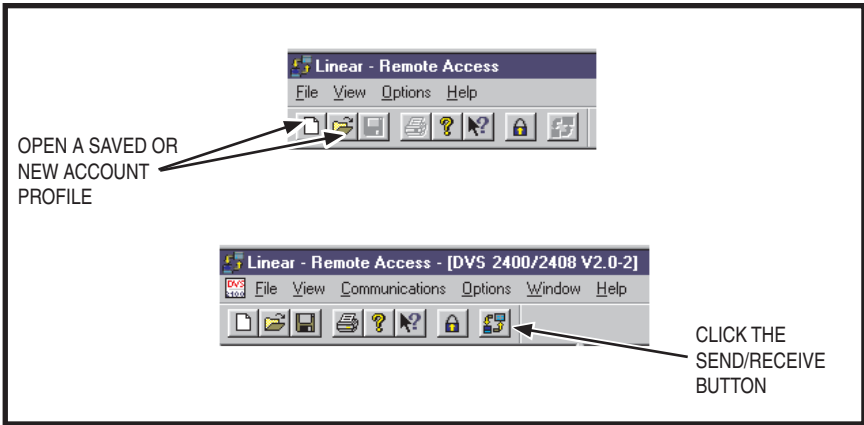
ADEMCO CONTACT-ID OPENING & CLOSING REPORT CODES		
ACCESS CODE	ADEMCO CLOSING (ARMING) CODE	ADEMCO OPENING (DISARMING) CODE
MASTER ACCESS CODE	R401 C000	E401 C000
RESTRICTED ACCESS CODE #1	R401 C001	E401 C001
RESTRICTED ACCESS CODE #2	R401 C002	E401 C002
RESTRICTED ACCESS CODE #3	R401 C003	E401 C003
RESTRICTED ACCESS CODE #4	R401 C004	E401 C004
RESTRICTED ACCESS CODE #5	R401 C005	E401 C005
REMOTE/HARDWIRE ARM & QUICK ARM	R407 C007	
REMOTE/HARDWIRE DISARM		E407 C007

5. SENDING AND RECEIVING CONSOLE DATA

5.1	ACCESSING THE SEND/RECEIVE WINDOW	38
5.2	CHOOSING AN ACCOUNT PROFILE	39
5.3	CONNECTING TO A CONSOLE	40
5.4	SENDING DATA	42
5.5	RECEIVING DATA.	43
5.6	CHANGING THE CONSOLE'S MODE	44
5.7	DISCONNECTING FROM THE CONSOLE.	45
5.8	CLOSING RA-2400	46

Sending and receiving the Account Profile data to the DVS-2400 Console is the main purpose of the RA-2400 program. The Account Profiles that you create exist only on your disk drive until they are copied to a Console. The Send/Receive window controls all external communications for the RA-2400 software. It is used to select which Account Profile gets sent to, or received from, a Console in the field (accessed through remote dialing) or connected directly to the modem (accessed through a local cable connection). See Section 3.3 for connection details.

5.1 ACCESSING THE SEND/RECEIVE WINDOW



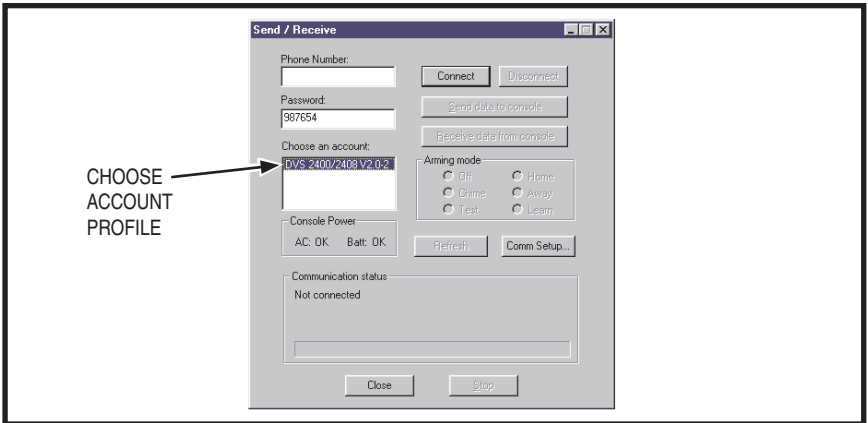
PURPOSE:

For entering data required to connect to a DVS-2400 Console and to control the connection. Monitors the status of the communication between the RA-2400 and the DVS-2400.

USER RESPONSE:

- ◆ An Account Profile file must be open before the Send/Receive window can be accessed. Use the **OPEN...** or **NEW** command in the **FILE** menu or on the tool bar to load an Account Profile into the workspace.
- ◆ From the **COMMUNICATIONS** menu, choose **SEND/RECEIVE...**, or click on the **SEND/RECEIVE** button on the tool bar.

5.2 CHOOSING AN ACCOUNT PROFILE



PURPOSE:

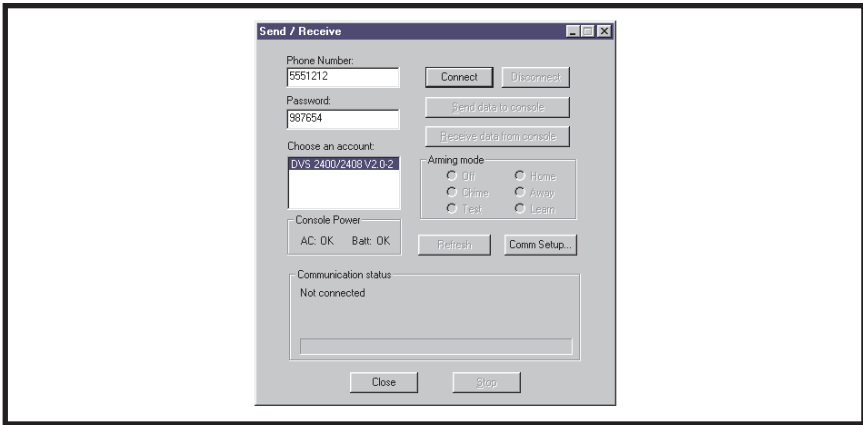
For selecting which Account Profile open in the workspace will be used when connecting to a Console. The Account Profile selected automatically fills in the Console's Phone Number and Password Fields using information already entered in the profile (see Section 2.4).

USER RESPONSE:

CHOOSE AN ACCOUNT

- ◆ Click on the desired Account Profile in the **Choose an Account** box for the Console that is going to be programmed. The installation telephone number and Console password should appear in the boxes.

5.3 CONNECTING TO A CONSOLE



PURPOSE:

Causes the RA-2400 to connect to the DVS-2400 Console. The RA-2400 will try to connect to the Console either locally or remotely, depending on the Communications Setup (see Section 3.3).

NOTE: *The Communications Setup can be reviewed by pressing the **COMM SETUP...** button in the Send/Receive window.*

USER RESPONSE:

NOTE: *Before connecting to a Console, it is recommended that all of the sensors used in the system be entered into the Console's memory. This will prevent having to connect to the Console again after programming if modification of the sensor options is required.*

BEFORE CONNECTING

- ◆ Be sure the computer's modem is powered on, connected, and tested as described in Section 1.5 of this manual.
- ◆ Check that the Console is powered on.
- ◆ Be sure that the Account Profile you want to associate with the particular Console is selected in the **Choose an Account** box.

5.3 CONNECTING TO A CONSOLE (CONTINUED)

CONNECTING LOCALLY

- ◆ Verify that the modem's LINE jack is connected to the Console's T&R Terminals with a cable.
- ◆ Verify that the Console is in Test Mode.
- ◆ Click the **CONNECT** button. The **Communication Status** area will show the progress of the connection. **WAIT UNTIL THE TIMEOUT TIMER BEGINS TO COUNT DOWN BEFORE PROCEEDING.**
- ◆ As the timeout timer counts down, **PRESS THE EMERGENCY BUTTON ON THE CONSOLE.**

CONNECTING REMOTELY

- ◆ Be sure that the modem's LINE jack is connected to a working telephone line.
- ◆ Verify that the Console's T&R Terminals are connected to a working telephone line.
- ◆ Click the **CONNECT** button. The **Communications Status** area will show the progress of the connection. **WAIT FOR THE CONNECTION TO COMPLETE.** The RA-2400 will dial the number once, wait for a few rings, hang-up, then dial a second time. The Console should answer the telephone immediately when the telephone rings during the second dialing attempt.

After connecting the **Communications Status** area will show the progress of the on-line connection, then display "Connected" and the DVS-2400 version number.

The **Console Power** area will show the status of the Console's AC power and backup battery. The **Arming Mode** area will show the Console's current mode. Pressing the **REFRESH** button will update the displayed information.

Local Connection in Progress

Send / Receive

Phone Number: 178

Connect Disconnect

Password: 987654

Send data to console

Receive data from console

Choose an account: DVS 2400/2408 V2.0-4

Arming mode

Off Home

Chime Away

Test Learn

Console Power

AC: OK Batt: Low

Refresh Conn Setup

Communication status

Not connected

Connect by pressing the emergency button while in test mode.

Timeout in 53 sec

Close Stop

Remote Connection in Progress

Send / Receive

Phone Number: 178

Connect Disconnect

Password: 987654

Send data to console

Receive data from console

Choose an account: DVS 2400/2408 V2.0-4

Arming mode

Off Home

Chime Away

Test Learn

Console Power

AC: OK Batt: Low

Refresh Conn Setup

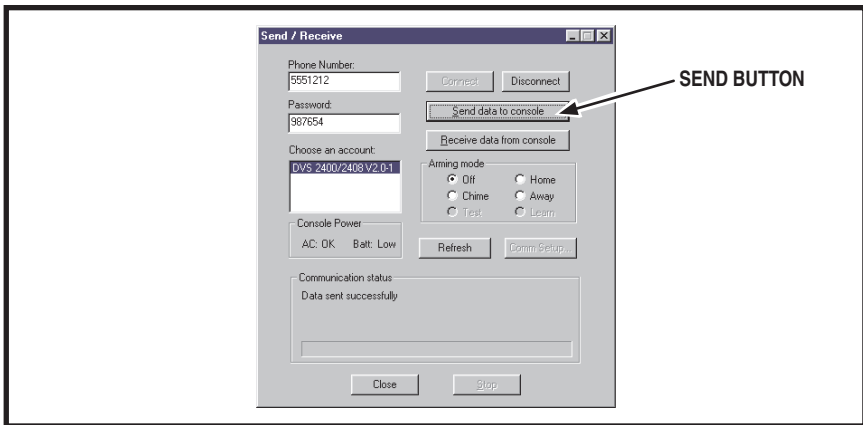
Communication status

Not connected

Dialing the first time...

Close Stop

5.4 SENDING DATA



PURPOSE:

For transferring data from an Account Profile to a DVS-2400 Console.

- ⚠ **CAUTION:** Receiving the data from the Console will overwrite the data in the Account Profile. If you have made changes to the Account Profile, save the profile, then send the profile to the Console before receiving the data into the profile. This leaves previously learned sensor information unchanged. If this is a new Account Profile, its OK to receive the Console data into the new profile.

USER RESPONSE:

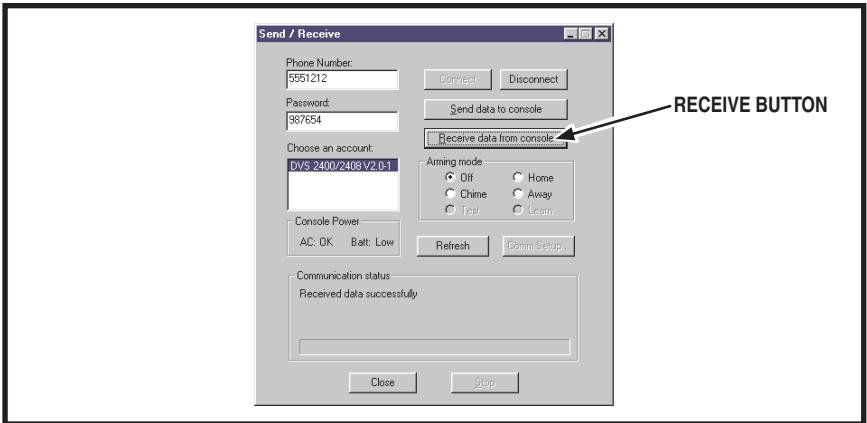
SENDING

- ◆ Click the **SEND DATA TO CONSOLE** button. The **Communications Status** area will indicate the progress and show if the data was sent to the Console successfully.

SPECIAL NOTES:

You can make changes to the Account Profile while the Console is connected. Be sure to send any changes to the Console before disconnecting. Minimize the Send/Receive window or slide it out of the way before editing the Account Profile. There is a time limit to the connection. The Console will automatically disconnect after three minutes of inactivity.

5.5 RECEIVING DATA



PURPOSE:

For transferring data from a DVS-2400 Console to an Account Profile.

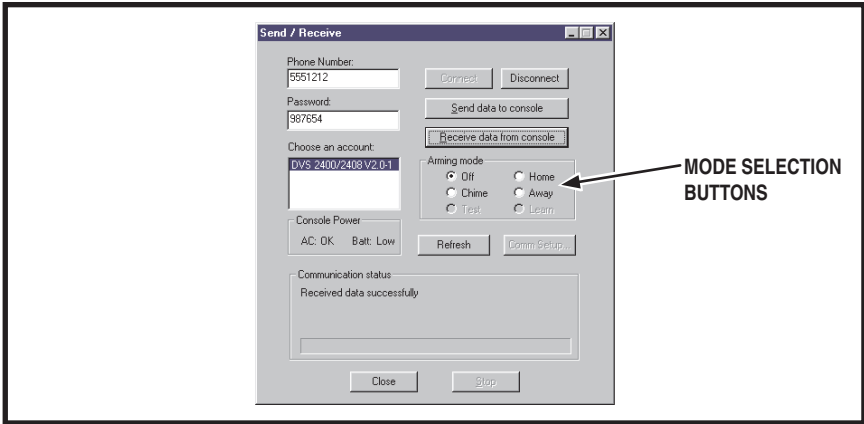
CAUTION: Receiving the data from the Console will overwrite the data in the Account Profile.

USER RESPONSE:

RECEIVING

- ◆ Click the **RECEIVE DATA FROM CONSOLE** button. The **Communications Status** area will indicate the progress and show if the data was received from the Console successfully.

5.6 CHANGING THE CONSOLE'S MODE



PURPOSE:

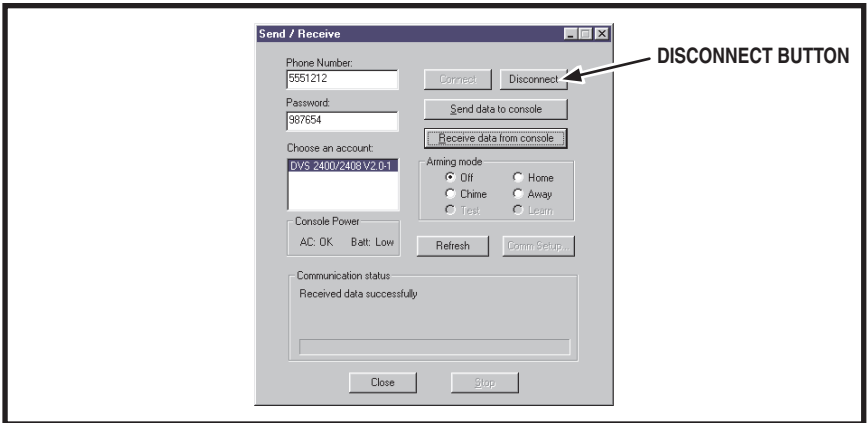
To remotely view and change the operating mode of the Console.

USER RESPONSE:

ARMING MODE

- ◆ View the current operating mode of the Console in the **ARMING MODE** display area.
- ◆ To change the current operating mode of the Console, select the desired mode button (**OFF**, **CHIME**, **HOME**, or **AWAY**) in the **ARMING MODE** display area.
- **NOTE:** *Test Mode and Learn Mode can only be selected directly from the Console's keypad.*

5.7 DISCONNECTING FROM THE CONSOLE



PURPOSE:

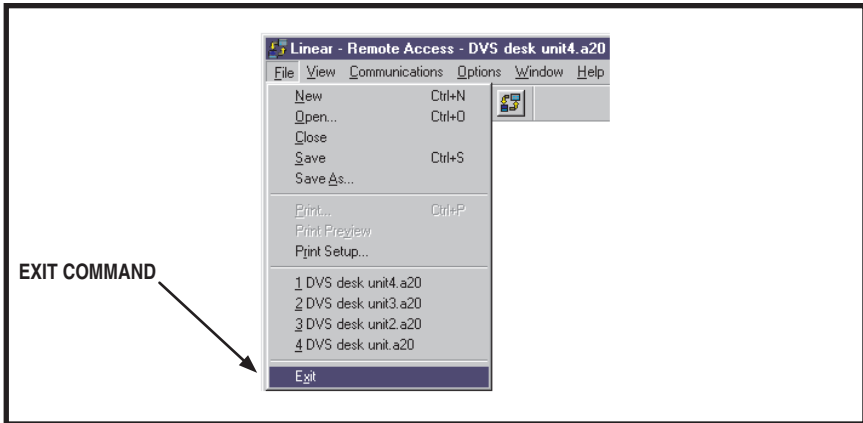
To end the programming session and disconnect the modem from the Console.

USER RESPONSE:

DISCONNECTING

- ◆ When finished communicating with the Console, click on the **DISCONNECT** button. The **Communications Status** area will show **Not Connected** when the Console has been disconnected.

5.8 CLOSING RA-2400



PURPOSE:

To save the active Account Profile(s) and quit the RA-2400 program.

USER RESPONSE:

- ◆ From the **FILE** menu, choose **EXIT**.
- ◆ To save while exiting, in the **SAVE CHANGES?** window click **YES**.
If the active Account Profile is the default template, select a location and new name for the file and click **SAVE**.
If the active Account Profile already has a custom file name, it will be saved with the same name.

NOTE: If more than one Account Profile template is open and has been changed, additional **SAVE CHANGES?** windows will appear.

IMPORTANT:

AFTER ANY PROGRAMMING CHANGES ARE MADE TO A CONSOLE, PERFORM THROUGH TESTING TO VERIFY THAT THE CONSOLE OPERATES AS INTENDED.